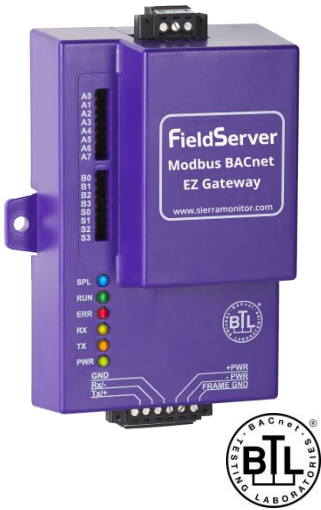


FieldServer Data Sheet – EZ Gateway Modbus to BACnet



The EZ Gateways is an easy-to-use, high-performance, building and industrial automation protocol gateway for system integrators to be used in commercial buildings, campuses or industrial facilities. The EZ Gateway provides quick multi-protocol deployment of field protocols to enable integrators to commission the gateway with ease.

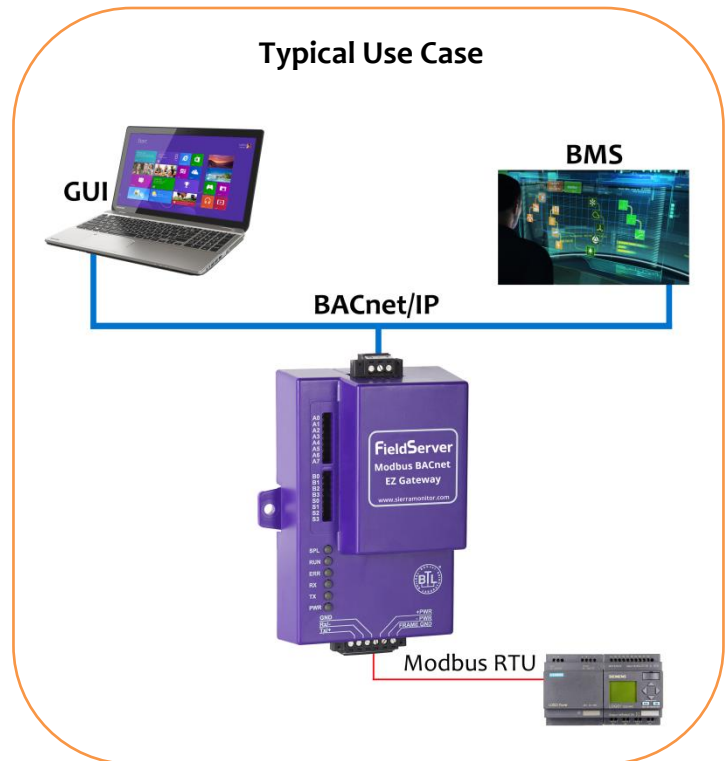
The EZ Gateway Modbus to BACnet is a quick and easy solution to a system integrator's Modbus to BACnet integration needs, the integrator or contractor does not need to be a protocol expert to connect any Modbus device to a BACnet system using either BACnet protocol.

DeviceProxy™, our unique device management feature allows each Modbus device to be presented as a corresponding virtual BACnet device, each with its own Device instance, thereby providing granular visibility and control over each Modbus device within a BACnet management framework (examples: offline / online status is visible at the individual Modbus device).

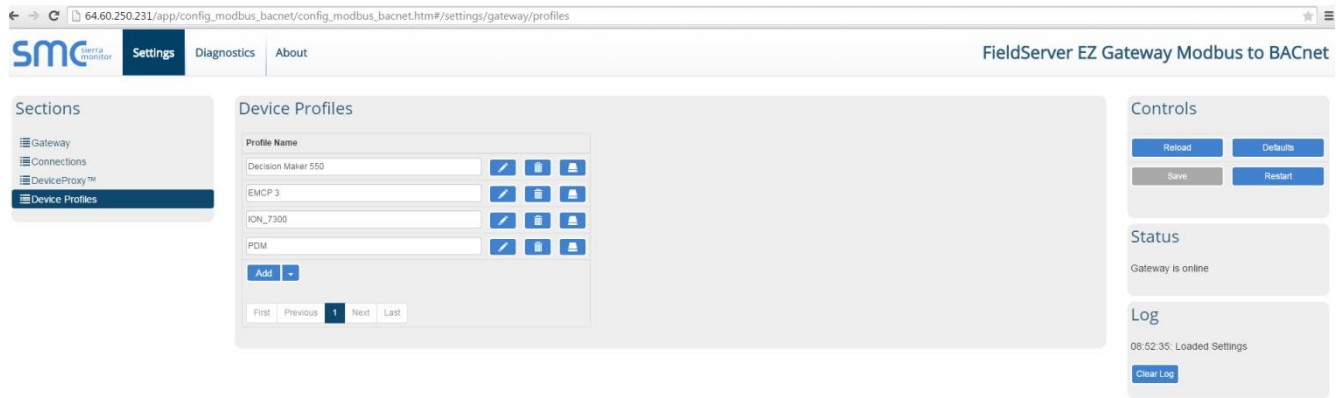
With Modbus to BACnet EZ Profiles, integrators can create or upload predefined configuration Profiles into the EZ Gateway for fast configuration & commissioning.

EZ Gateway Solution

- ✓ Protocols supported
 - Modbus RTU
 - Modbus TCP/IP
 - BACnet MS/TP
 - BACnet/IP
- ✓ Any combination of the two Modbus protocols can be selected to connect to either of the BACnet protocols.
- ✓ No additional software needed to configure the EZ Gateway.
- ✓ Supports up to 32 Modbus RTU devices per EZ Gateway
- ✓ Supports up to 250 or 500 Modbus registers.
- ✓ BACnet COV support provides fast data communication while reducing the traffic over a BACnet network.
- ✓ BACnet BBMD Server support for connecting to remote BACnet networks.
- ✓ Supports virtual nodes allowing each Modbus device connected to a single EZ Gateway to be seen as a separate device on the BACnet network.
- ✓ Easy to configure via the Web Interface.
- ✓ Diagnostics of the devices connected to the EZ Gateway can be seen via the Web Interface.
- ✓ Modbus TCP/IP offers concurrent polling of devices to ensure a quick response.
- ✓ Modbus tried & tested driver.
- ✓ BTL approval marked.



BACnet® is a registered trademark of ASHRAE.



Configuration

The Web Interface is used to configure the Modbus and BACnet connections, and then profiles are created for each Modbus device to be connected to the EZ Gateway. The EZ profile can then be used for additional connections on this EZ Gateway or other EZ Gateways. The EZ profiles can be shared amongst anyone using the EZ Gateway

Environment

Operating temperature: -40 to 75°C (-40 to 167°F)
Relative humidity: 5-90% RH non-condensing

Power Requirements

9-30VDC or 12-24VAC
Current draw: @ 12V
FS-EZGWX-MOD-BAC: 240 mA

Physical Dimensions

H x W x D: 4.5 x 2.9 x 1.6 in. (11.5 x 7.4 x 4.1 cm)
Weight: 0.4 lbs (0.2 Kg)
Input voltage: 24 VDC nominal: 10-30VDC

Other

Configuration/Diagnostic utilities
Capacity: 250 points FS-QS-11XX
 (500 points FS-QS-12XX)
Table, Wall or DIN rail mount

Communication

Baud: 4800, 9600, 19200, 38400, 57600, 115200
Start Bit: 7, 8
Stop Bit: 1, 2
Parity: Even, Odd, None
Ethernet: 10/100 BaseT MDIX

*Specifications subject to change without notice

Approvals

TUV Approved to UL 916, EN 60950-1, EN 50491-3
 and CSA C22.2 standards

BTL Mark
RoHS Compliant
GOST-R Certified
CE and FCC



Ordering Information

EZ Gateway is available in multiple driver configurations. Check the website (www.sierramonitor.com) for specific part numbers.

- ✓ FS-EZ1-MOD-BAC 250 Points
- ✓ FS-EZ2-MOD-BAC 500 Points

Options

The Accessory Kit consists of a power supply, Ethernet cable, Screwdriver, DIN Rail Mount, and USB flash drive of all manuals, data sheets, Discovery tool and ENotes.

- ✓ FS-8915-36-QS Accessory Kit, 110/220V