

Sentry IT Data Sheet - Sentry InSite Appliance

Overview

The Sentry InSite Appliance connects a Sentry or a Sentry IT Controller to an Ethernet-based communications network and enables web-based system monitoring. The specific functions implemented on the Sentry InSite Appliance are:

- The Sentry InSite Appliance acts as the web-based HMI to the Sentry Fire and Gas solution with well-defined auto generated web pages highlighting status, alarm, and other relevant information. The web pages can be viewed by PCs, tablets and smart phones connected to the local Ethernet network.
- The Sentry InSite Appliance functions as a protocol gateway, enabling the Sentry or Sentry IT Controller to integrate with the facility's SCADA or management system over an Ethernet network, using Modbus TCP/IP or EtherNet/IP protocols.



Quick View

In the Quick View, users view all the connected devices and a Current Status List in one comprehensive page. The Current Status List shows all devices that have a status change other than safe: trouble, warning, and alarm. Facility safety managers can regularly look at the Quick View to see how all their connected devices are functioning within the facility.

Quick View – Safe

Number	User Tag	Value	Type	Status
001	IT Loop A - 01	0.0 %LEL	Methane	Safe
002	Any tag name	0.0 %LEL	Methane	Safe
003	North Tank 3	0.0 %LEL	Methane	Safe
004	Bay 11 North	0.0 %LEL	Methane	Safe
005	IT Loop A - 05	0.0 %LEL	Methane	Safe
006	IT Loop A - 06	0.0 %LEL	Methane	Safe
007	IT Loop A - 07	0.0 %LEL	Methane	Safe
008	IT Loop A - 08	0.0 %LEL	Methane	Safe
009	IT Loop A - 09	0.0 %LEL	Methane	Safe
010	IT Loop A - 10	0.0 %LEL	Methane	Safe
011	IT Loop A - 11	0.0 %LEL	Methane	Safe
012	IT Loop A - 12	0.0 %LEL	Methane	Safe
013	IT Loop A - 13	0.0 %LEL	Methane	Safe
014	IT Loop A - 14	0.0 %LEL	Methane	Safe
015	IT Loop A - 15	0.0 %LEL	Methane	Safe
016	IT Loop A - 16	0.0 %LEL	Methane	Safe
017	IT Loop B - 01	0.0 %LEL	Methane	Safe
018	IT Loop B - 02	0.0 %LEL	Methane	Safe
019	IT Loop B - 03	0.0 PPM	H2S	Safe
020	IT Loop B - 04	0.0 %LEL	Methane	Safe
021	IT Loop B - 05	0.0 %LEL	Methane	Safe
022	IT Loop B - 06	0.0 %LEL	Methane	Safe
023	IT Loop B - 07	0.0 PPM	CO	Safe

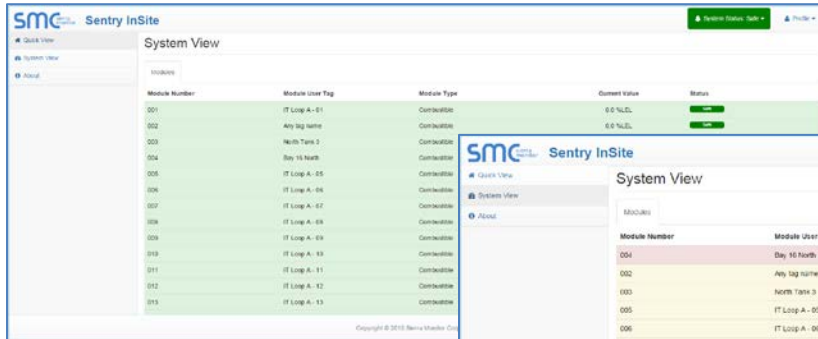
Quick View – Alarm

Number	User Tag	Value	Type	Status
001	IT Loop A - 01	0.0 %LEL	Methane	Safe
002	Any tag name	24.0 %LEL	Methane	Warning
003	North Tank 3	41.0 %LEL	Methane	Warning
004	Bay 11 North	65.0 %LEL	Methane	Alarm
005	IT Loop A - 05	37.0 %LEL	Methane	Warning
006	IT Loop A - 06	29.0 %LEL	Methane	Warning
007	IT Loop A - 07	3.0 %LEL	Methane	Safe
008	IT Loop A - 08	0.0 %LEL	Methane	Safe
009	IT Loop A - 09	0.0 %LEL	Methane	Safe
010	IT Loop A - 10	2.0 %LEL	Methane	Safe
011	IT Loop A - 11	0.0 %LEL	Methane	Safe
012	IT Loop A - 12	5.8 %LEL	Methane	Safe
013	IT Loop A - 13	0.0 %LEL	Methane	Safe
014	IT Loop A - 14	7.3 %LEL	Methane	Safe
015	IT Loop A - 15	0.0 %LEL	Methane	Safe
016	IT Loop A - 16	20.4 %LEL	Methane	Warning
017	IT Loop B - 01	0.0 %LEL	Methane	Safe
018	IT Loop B - 02	0.0 %LEL	Methane	Safe
019	IT Loop B - 03	0.0 PPM	H2S	Safe
020	IT Loop B - 04	0.0 %LEL	Methane	Safe
021	IT Loop B - 05	0.0 %LEL	Methane	Safe
022	IT Loop B - 06	0.0 %LEL	Methane	Safe
023	IT Loop B - 07	0.0 PPM	CO	Safe

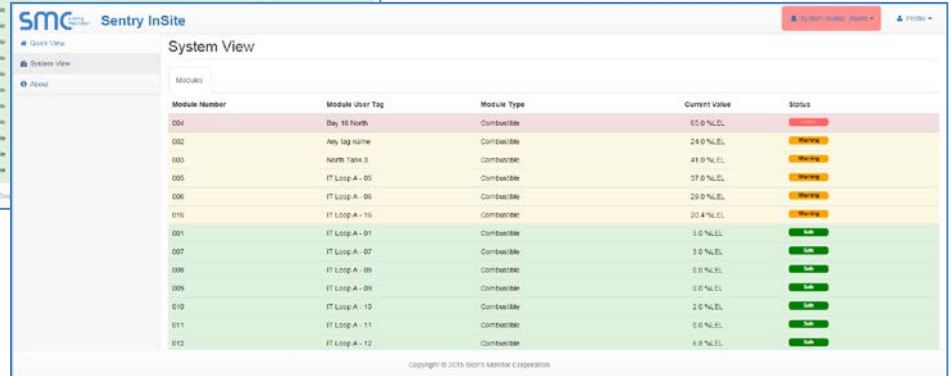
System View

The System View provides an in-depth view into all the connected devices and automatically sorts the hierarchy of the devices with a status change to the top for convenient notification. The System View is a powerful management tool that facility safety managers have at their disposal.

System View – Safe



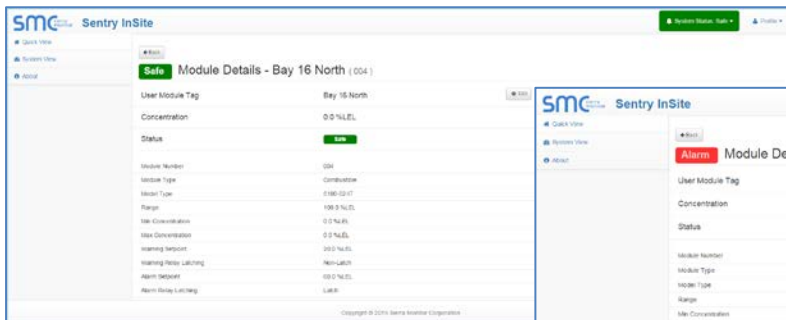
System View – Alarm



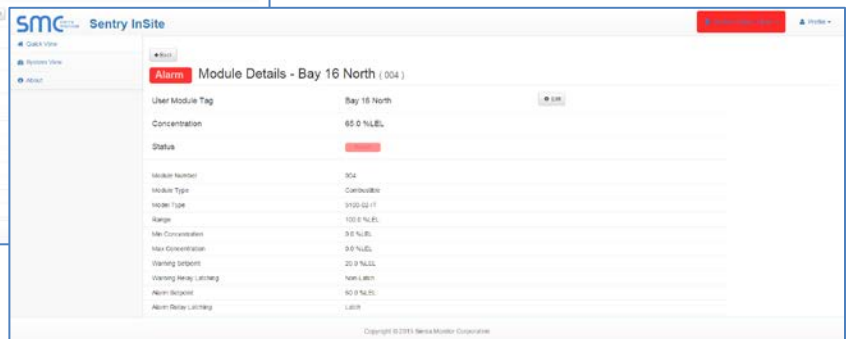
Module Details

The Module Details found within the System View allows the ability to drill down into each module to see vital information such as module names and types, maintenance or calibration intervals, warning and alarm setpoints, and more.

Module Details – Safe



Module Details – Alarm



Protocol Gateway Application

The Sentry InSite Appliance can enable system connectivity by providing a Modbus protocol gateway. InSite can convert the controller's internal Modbus protocol to one of any of the 140 different protocol drivers in our library.

Custom Applications

Call the factory for custom applications such as other protocols, custom app/pages, etc.