

FieldServer Data Sheet – EZ Gateway KNX to BACnet



The EZ Gateway KNX to BACnet (FS-EZX-KNX-BAC) is an easy-to-use, high-performance building and industrial automation protocol gateway for integrators to interface KNX certified products to BACnet management systems in commercial buildings, campuses, and industrial facilities. KNX-certified products encompass a wide range of applications such as lighting control, heating, ventilation and air conditioning control, shutter/blind and shading control, alarm monitoring, energy, gas, and water metering, and audio and video distribution. The EZ Gateway KNX to BACnet integrates such KNX-based devices and systems to BACnet-based management systems over BACnet MS/TP or BACnet/IP protocols.

The EZ Gateway KNX to BACnet combines field-hardened KNX and BACnet protocol drivers with an easy to use configuration interface. The built in web configurator allows for KNX Group addresses to be imported from the ETS software tool, making the configuration of medium to large networks quick and easy.

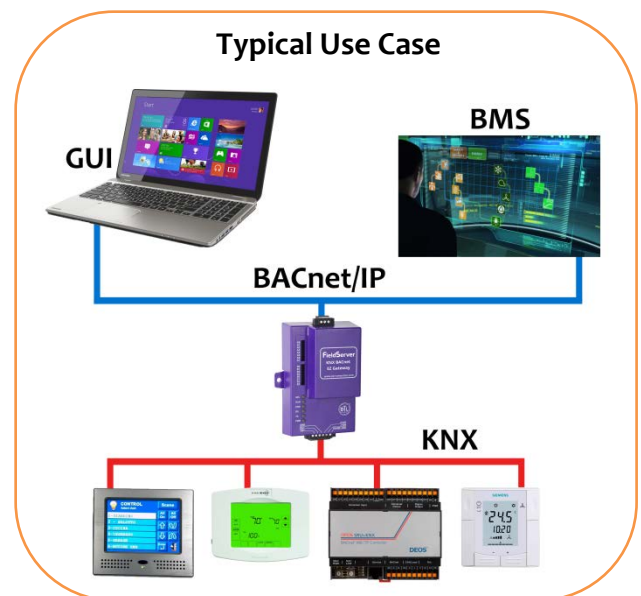
The EZ Gateway's KNX interface is compatible with all KNX-certified products, while the EZ Gateway's BACnet interface has been certified by BACnet Test Laboratory (BTL), at Version 12. The intuitive web-based interface allows configurations to be built in the field or in the office, thereby simplifying the commissioning and integration process.

Sierra Monitor's unique FieldServer DeviceProxy™ feature allows each KNX device to be presented as a corresponding virtual BACnet device within the EZ Gateway, thereby providing granular visibility and control over each KNX device from within a BACnet management framework. For example, offline / online status is visible at the individual KNX device.

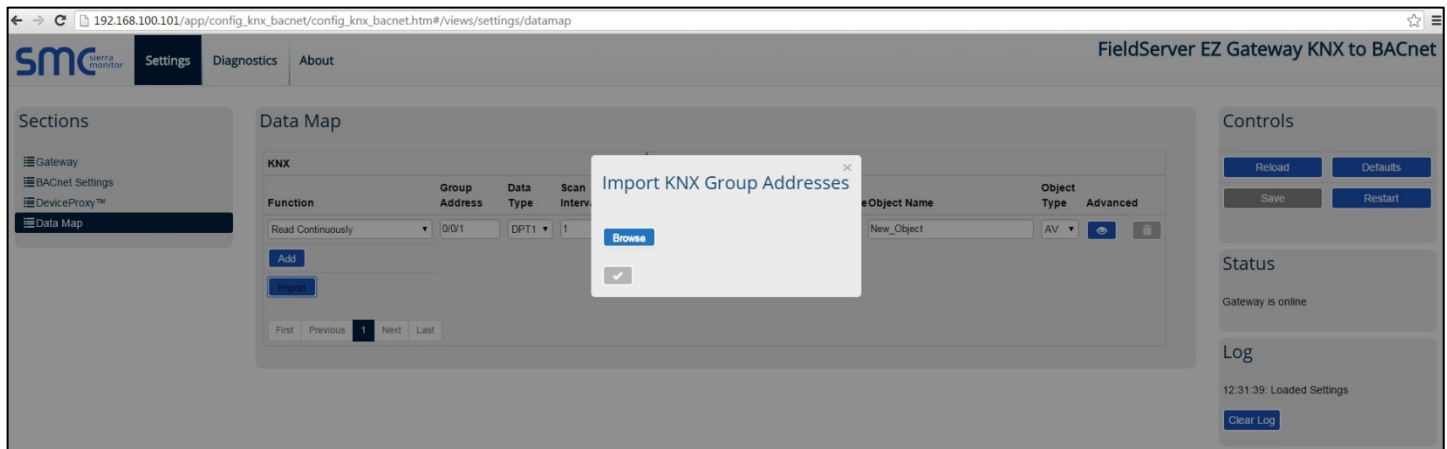
With the EZ Gateway KNX to BACnet, the integrator or contractor does not need to be a protocol expert, and can minimize configuration and commissioning time, while also reducing ongoing operating and maintenance costs.

EZ Gateway Solution

- ◆ KNX physical interface built into the EZ Gateway
- ◆ Protocols supported:
 - KNX
 - BACnet MS/TP
 - BACnet/IP
- ◆ Import KNX Group address from ETS software tool
- ◆ Supports up to 250 or 500 KNX points
- ◆ BACnet COV support provides fast data communication while reducing the traffic over a BACnet network
- ◆ BACnet BBMD Server support for connecting to remote BACnet networks
- ◆ DeviceProxy supports virtual nodes, allowing each KNX device connected to a EZ Gateway to be seen as a separate device on the BACnet network
- ◆ Easy to configure via the Web Interface
- ◆ Diagnostics of the devices connected to the EZ Gateway can be seen via the Web Interface
- ◆ BTL certified to Revision 12



BACnet® is a registered trademark of ASHRAE.



Configuration

The Web Interface is used to configure the KNX and BACnet connections, and mappings are created for each KNX device to be connected to the EZ Gateway. KNX Group addresses can be imported from ETS to auto populate mapping tables. Specific KNX data points are mapped through to BACnet objects making integration easy and efficient.

Specifications

Environment

Operating temperature: -40 to 75°C (-40 to 167°F)
Relative humidity: 5-90% RH non-condensing

Power Requirements

9-30VDC or 12-24VAC
Current draw:
240 mA @ 12 VDC

Physical Dimensions

H x W x D: 4.5 x 2.9 x 1.6 in. (11.5 x 7.4 x 4.1 cm)
Weight: 0.4 lbs (0.2 Kg)
Input voltage: 24 VDC nominal: 10-30VDC

Other

Configuration/Diagnostic utilities
Capacity: 250 points FS-EZ1-KNX-BAC
500 points FS-EZ2-KNX-BAC
Table, Wall or DIN rail mount

Communication

Baud: 9600
Start Bit: 8
Stop Bit: 1
Parity: Odd
Ethernet:10/100 BaseT MDIX

*Specifications subject to change without notice

Approvals

TUV Approved to UL 916, EN 60950-1, EN 50491-3
and CSA C22.2 standards
BTL Certified Rev 12
RoHS Compliant
GOST-R Certified
CE and FCC



Ordering Information

The EZ Gateway KNX to BACnet is available in two different point count configurations.

- ◆ FS-EZ1-KNX-BAC (250 Points)
- ◆ FS-EZ2-KNX-BAC (500 Points)

Options

The Accessory Kit consists of a power supply, Ethernet cable, screwdriver, DIN Rail Mount, and a USB flash drive that includes all manuals, data sheets, discovery tool, and ENotes.

- ◆ FS-8915-36-QS Accessory Kit, 110/220V